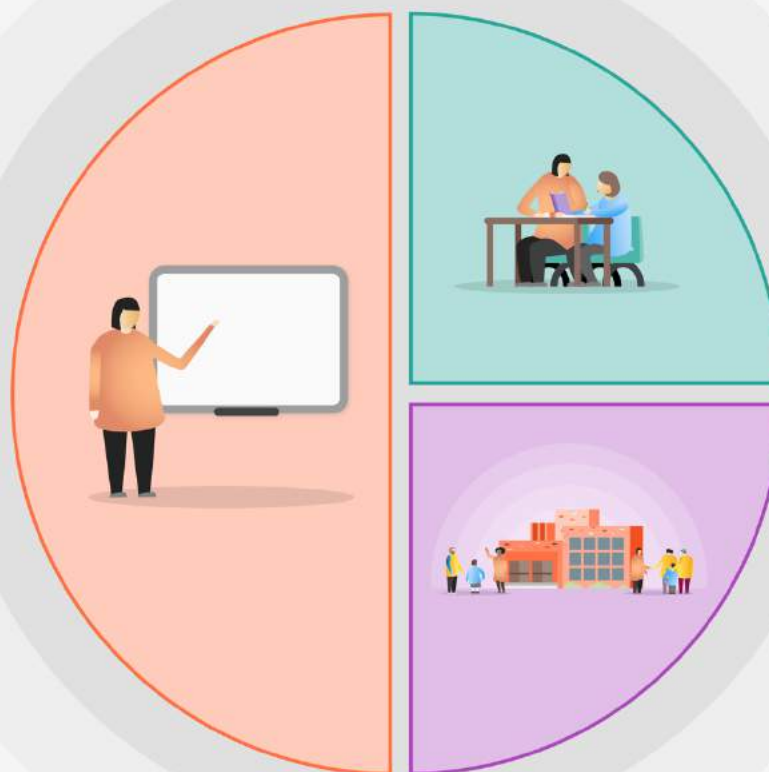


## 1 Teaching

- Evidence-informed teaching practice (particularly cognitive load theory and retrieval practice)
- Frequent low-stakes assessments – students requiring more support identified
- Equipment for staff to be able to effectively deliver remote lessons at school and home
- Devices loaned to students who do not have their own so they can access remote learning and study independently
- Literacy interventions
- Threshold concepts identified and teaching focusses on those areas
- Extra subject time/revision sessions recorded and in holidays



## 2 Targeted academic support

- Reading recovery programme
- Y11 Revision Booster Day
- Specific subject based resources
- Extra subject time/revision sessions recorded and in holidays

## 3 Wider strategies

- Parental engagement - parents' evening software
- Increased counselling capacity
- Virtual Careers Information Advice and Guidance
- Homework club
- Wellbeing teacher employed